



# City of Manchester, New Hampshire

## Neighborhood Health Improvement Strategy



Health Department

City of Manchester Health Department  
Granite United Way

**LIVE UNITED**

**United  
Way**



# Manchester, NH - Mid-Sized Urban Community

2 OUT OF 3



center city residents feel that there are people in their neighborhood who might be a bad influence on children

20% of students in title one elementary schools are habitually truant



7200 students are enrolled in the federal free meals program



3 out of 4

housing units were built before 1950  
half are renter occupied

## Other Health Risks Associated with Impoverished Neighborhoods



Increased Infant Mortality

Increased Asthma

Increased teen pregnancy

Increased Violence

Increased Coronary Heart Disease Mortality

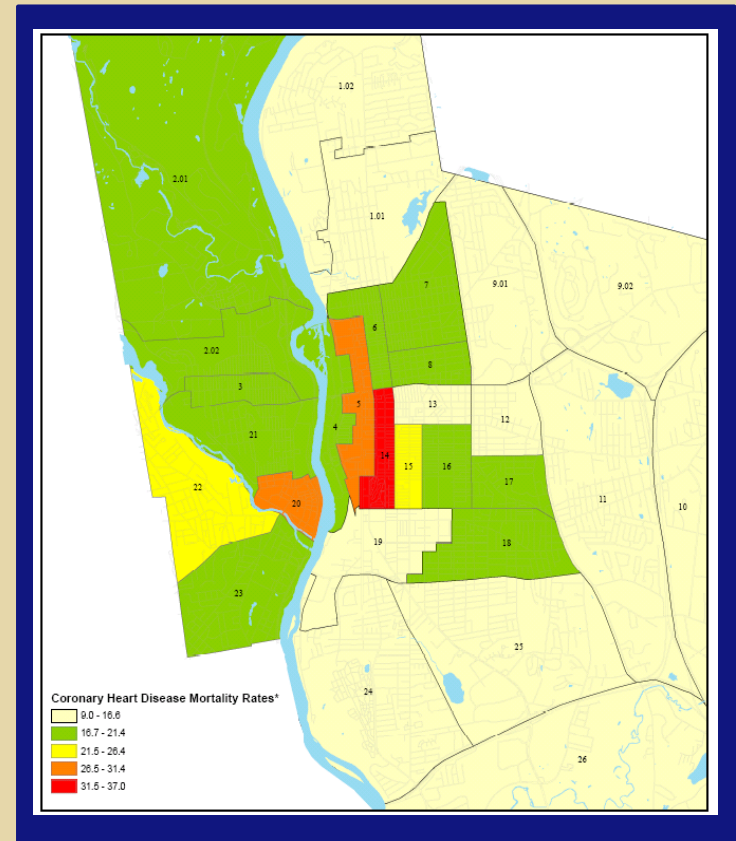


# Need for Sub-Geographic Data

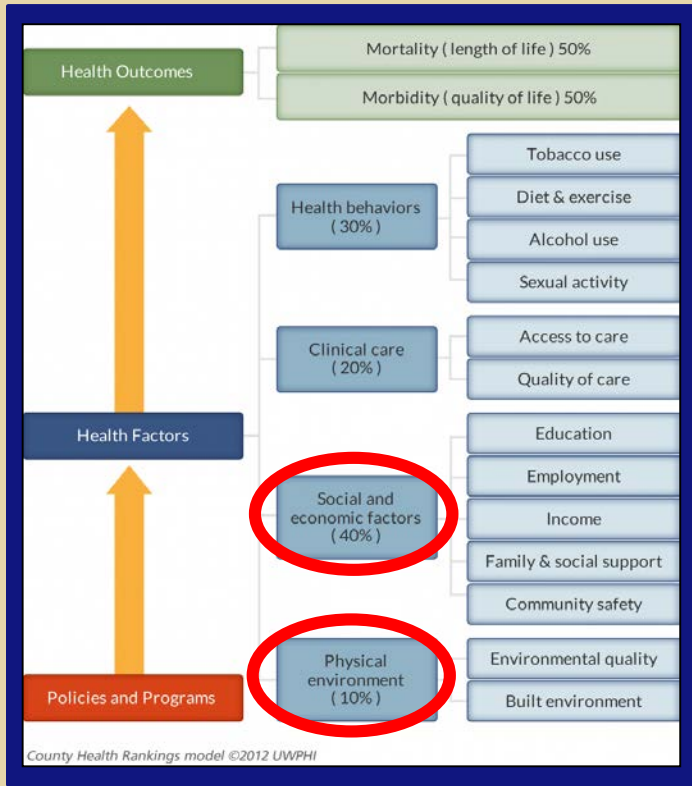
## Age-Adjusted Coronary Heart Disease Mortality by Census Tract

1995-2005

Rate differences due to neighborhood poverty or deprivation

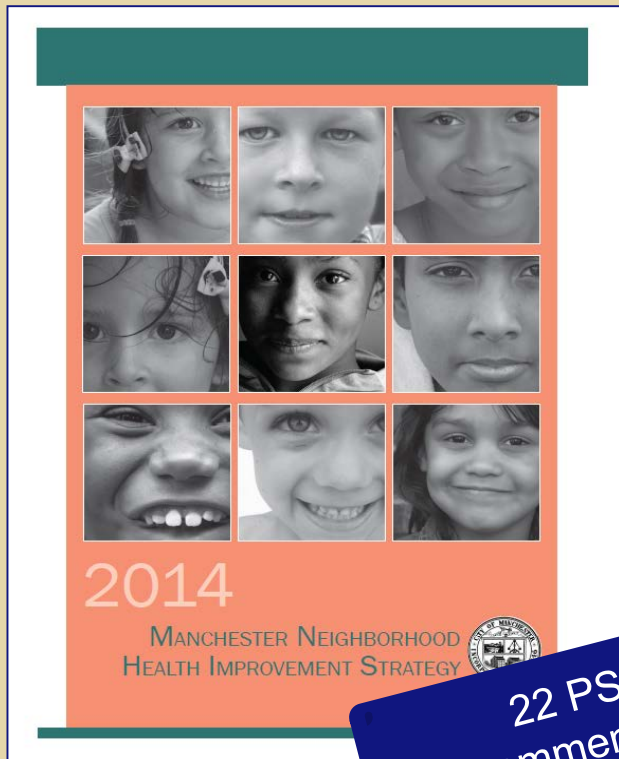


# Social Determinants of Health Approach

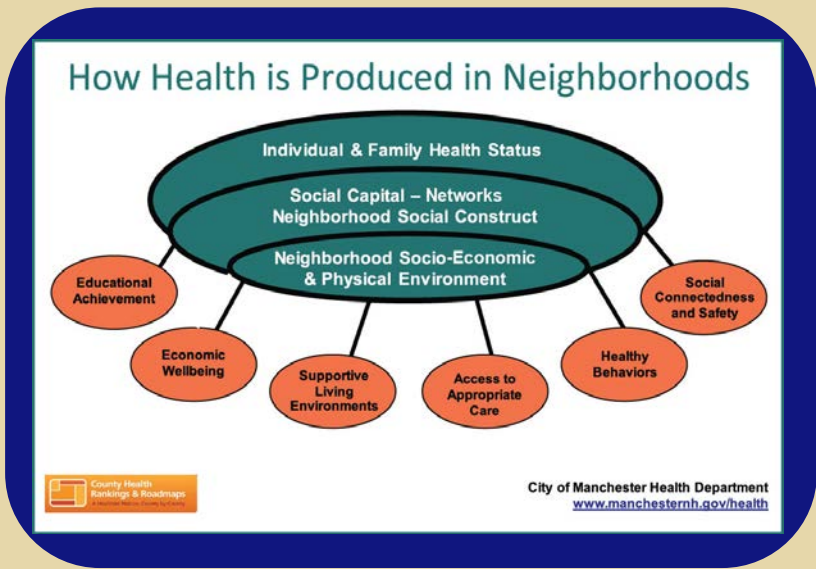




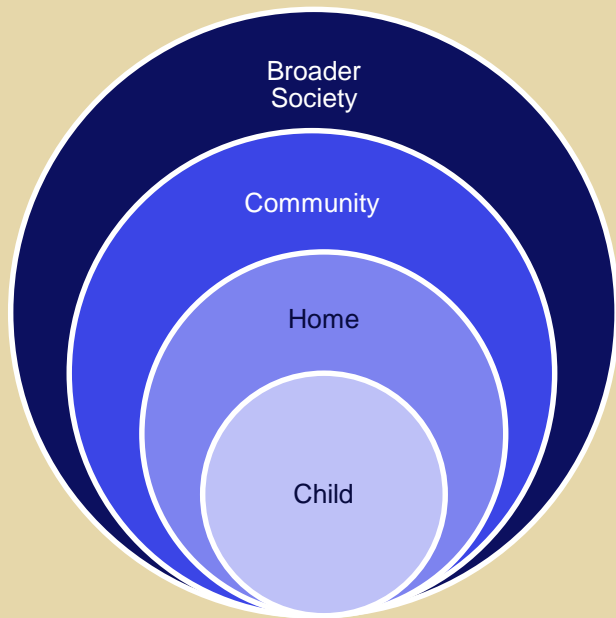
# Neighborhood Health Improvement Strategy



22 PSE  
Recommendations



# Engaged Philanthropy: Community Impact Redefined



## Improving Childhood Resiliency to Toxic Stress

Invested in the implementation of childhood resiliency curriculums in two Community Schools, reaching over 1,000 students.

## Building Adult Capacities

Invested in partner agencies to bring parent education, financial literacy, resident leadership development and employability training to Community Schools.

## Connecting Families to Critical Community Supports

Invested in “Family Success Coordinators” for Community Schools to connect with families in addressing chronic absenteeism and provide mental health/behavioral health supports.



Thank You!



Health Department

Jaime Hoebeke, MPH, MCHES  
Division Head, Neighborhood Health

Meredith Stidham, MSW  
Vice President, Community Impact

**LIVE UNITED**

**United  
Way**

