

CDC: Building a Response-Ready Public Health Data System

Suzi Connor

CDC Chief Information Officer
Centers for Disease Control and Prevention (CDC)

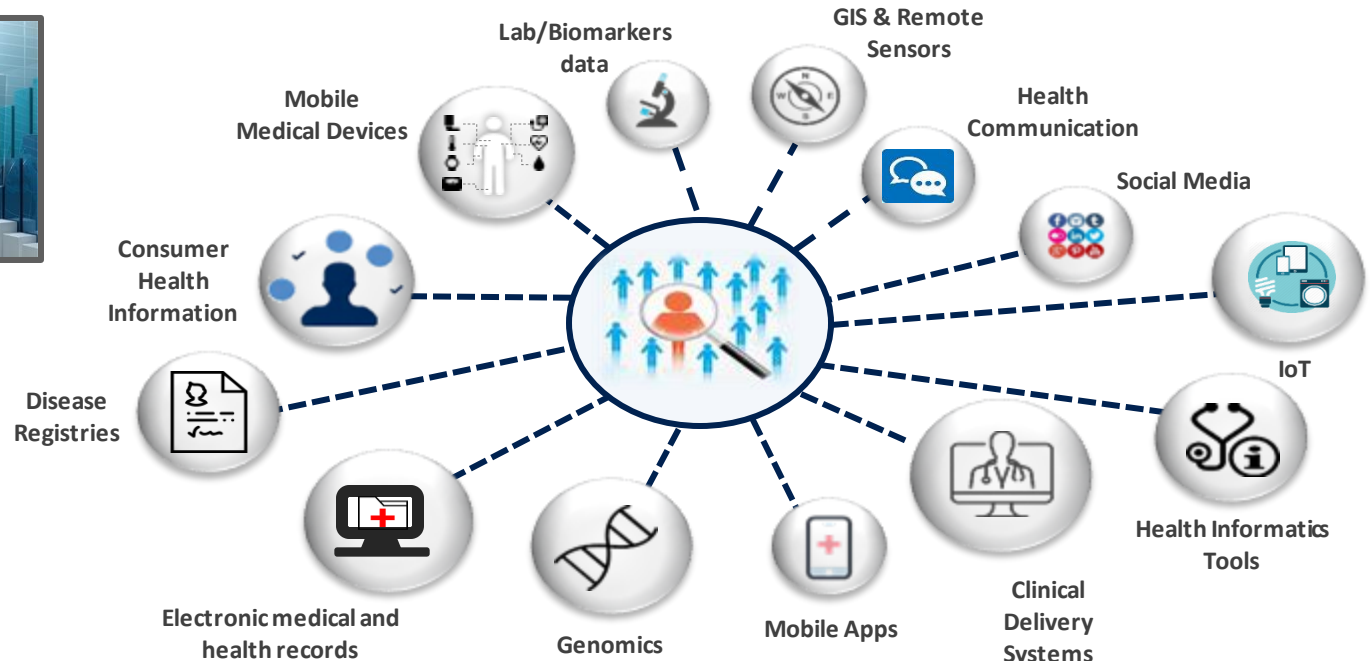
CDC Public Health Data Summit

September 27, 2023

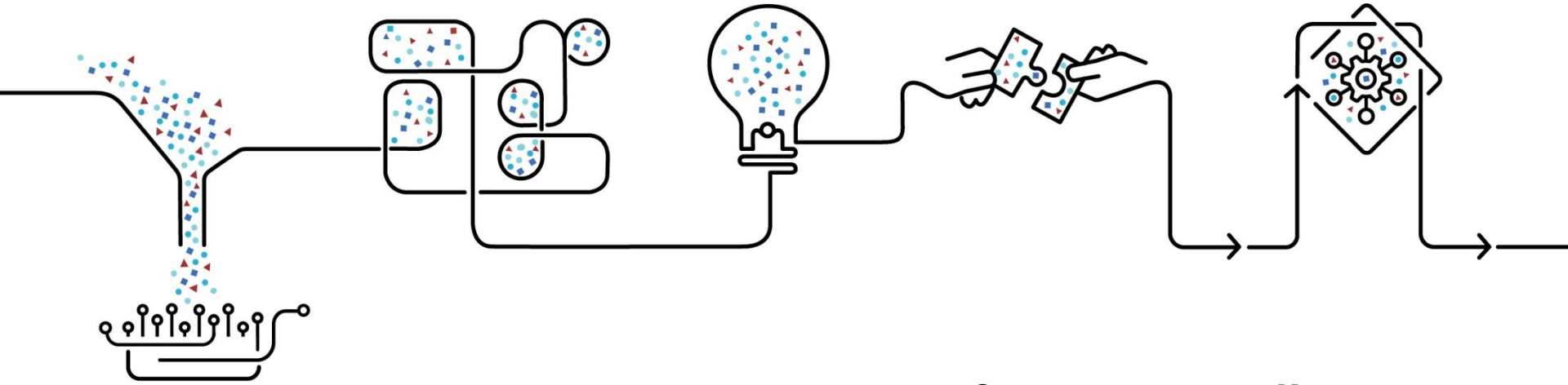


The Future is Now

By 2025, we enhance our public health analytical capability to maximize public health impact.



Data Modernization Initiative (DMI)



Build the right foundation

Provide the new information infrastructure and automated data sources for response-ready data sharing

Accelerate data into action

Create faster, more integrated data to provide a more real-time, 360-degree view of health and forecasts of health threats for greater disease prevention and response

Develop a state-of-the-art workforce

Identify, recruit, and retain experts in Health IT, Data Science, and Cybersecurity to generate meaningful public health insights

Support + extend partnerships

Engage with state, tribal, local, and territorial partners to address policy challenges and create new strategic partnerships to amplify knowledge

Manage change + governance

Provide the necessary structure to support modernization and aid adoption of unified technology, data, and data products

Blueprint for Success: CDC's North Star Architecture

North Star architecture guides the decisions we make around the technologies and processes we'll use to achieve the Public Health Data Strategy milestones.

MEETING PRESSING PUBLIC HEALTH CHALLENGES...

1 Reduce burden and friction

2 Increase interoperability

3 Remove siloes

4 Get relevant data quickly

5 Be responsive

...BY OFFERING...

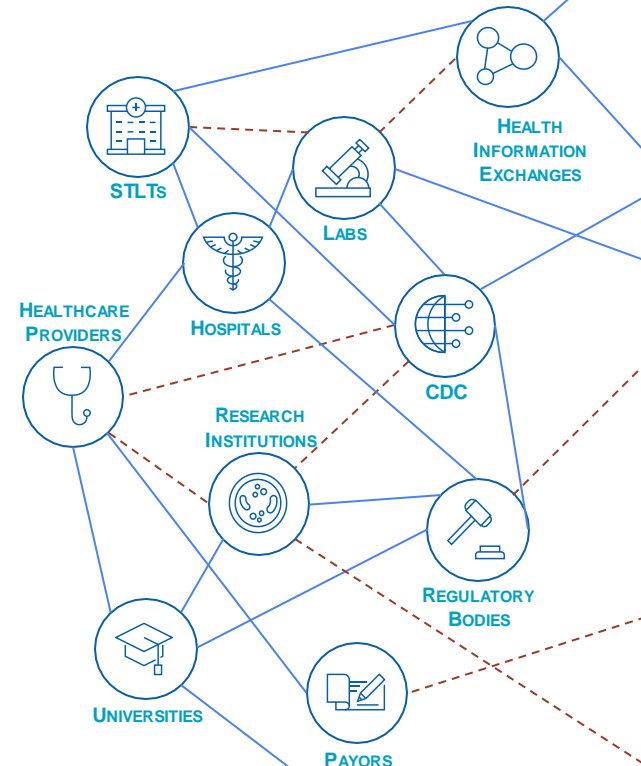
Flexible, standardized, and replicable tools

Secure cloud environments

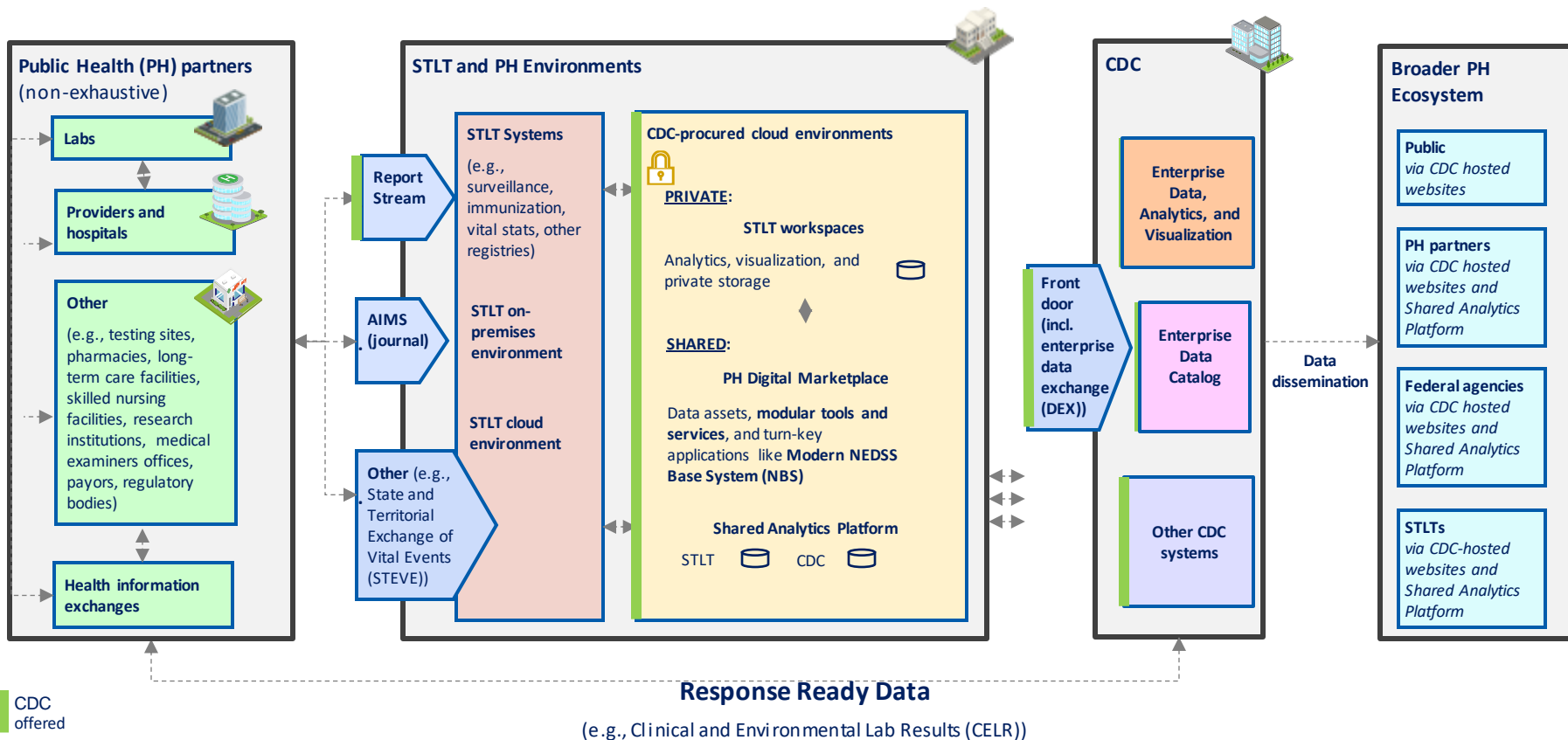
End-to-end public health approaches

Range of support levels to our state, tribal, local, and territorial (STLT) partners

User-centric design and development



North Star Architecture Components and Partners



Piloting North Star Architecture for Data Exchange

These cases identify opportunities and gaps as we scale to many infectious and non-infectious diseases.



1

Viral Hepatitis (infectious disease)

Detects outbreaks of viral hepatitis across the United States



2

Maternal and Newborn Health (non-infectious)

SET-NET: Surveillance for Emerging Threats to Pregnant People and Babies Network
Improves maternal and newborn health

Pilots provide end-to-end proof of:



Public health impact

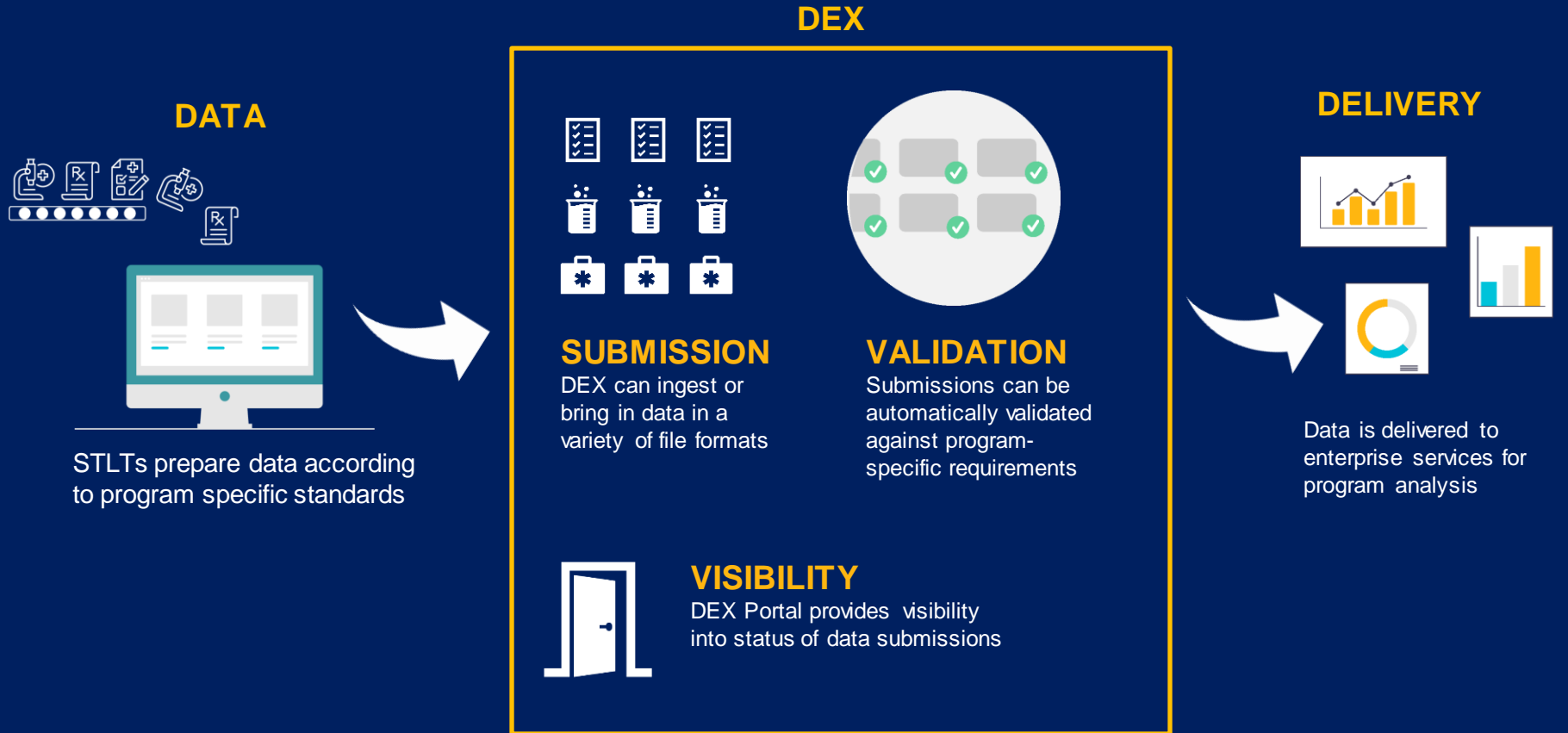


Feasibility



Scalability

Enterprise Data Exchange - DEX



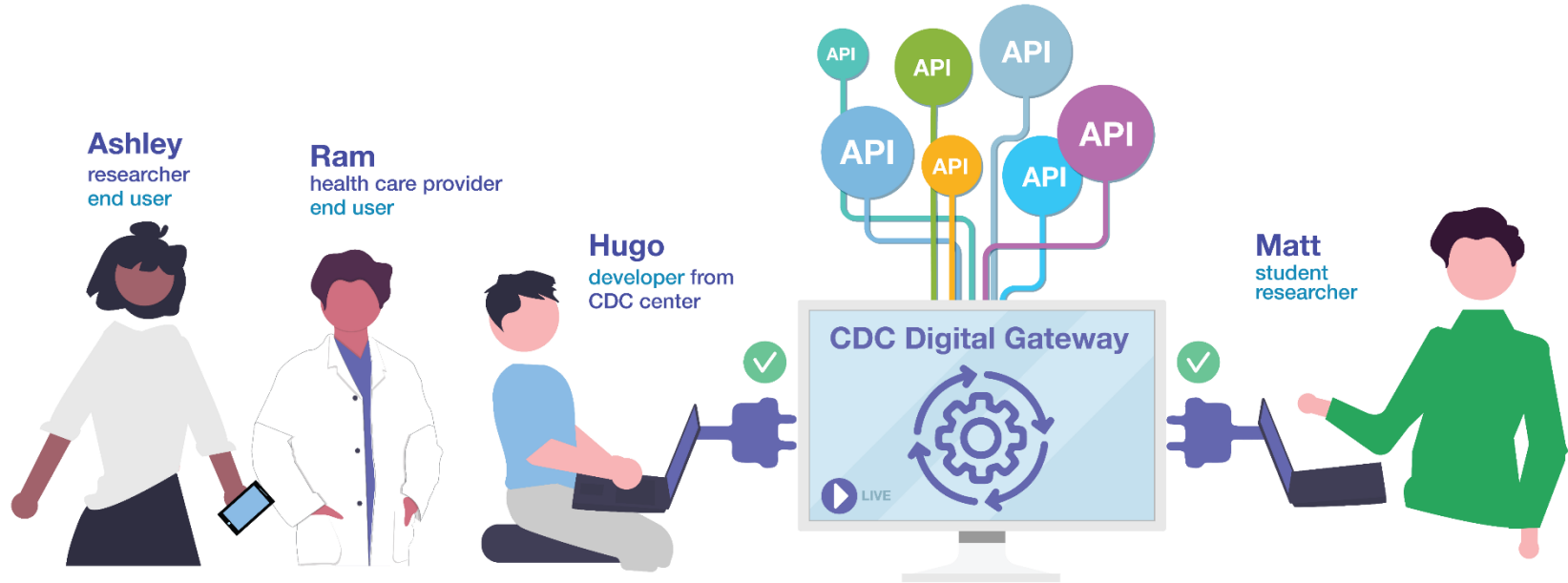
DEX Successes

- **Immunization (IZ) Gateway**
quarterly data transfer to CDC from six states. Nearly 2 dozen more coming online shortly with DUAs.
- Surveillance for Emerging Threats to Pregnant People and Infants Network (SET-NET) **data transfer goes from weeks to days.**



CDC's Digital Gateway

A secure, modern platform for CDC's APIs that allows CDC programs, states, and other public health partners to quickly locate and access public health data in real time.



Workforce: Training Existing Staff Across the Agency

- Career Ready Program
- Data Academy
- Data Science Upskilling Program
- Diversity, Equity, Inclusion, Accessibility and Belonging (DEIAB)



Forums to Stay Updated on North Star Architecture Updates

Focus of Forum

Forum of Engagement

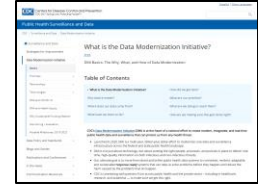
Asks from This Group

Information sharing



DMI related websites

Check the DMI related websites regularly for updates on progress of the North Star Architecture.



CDC websites: North Star Architecture DMI, and specific funding related webpages



DMI webinars

Attend DMI webinars to be apprised of the latest updates.



DMI consortium

Continue to **join and provide feedback** during the DMI consortium meetings.



STLT focus groups

Encourage STLT users with 'lived experience' **to volunteer to be a part of CDC's engagement panel via focus groups.**
Reach out to dmibuildingblocks@cdc.gov.

Input gathering



Connecting technology, data, and people so we can move faster than disease...

- Keeping pace with the rapid evolution of technology and data
- Improving the effectiveness of our public health services
- Creating a safer future for all



Thank You!

Visit our websites

Office of the Chief Information Officer

www.cdc.gov/od/ocio

Data Modernization Initiative

www.cdc.gov/surveillance/data-modernization



PROTECTING AMERICA'S SAFETY, HEALTH, AND SECURITY

For more information, contact CDC
1-800-CDC-INFO (232-4636)
TTY: 1-888-232-6348 www.cdc.gov

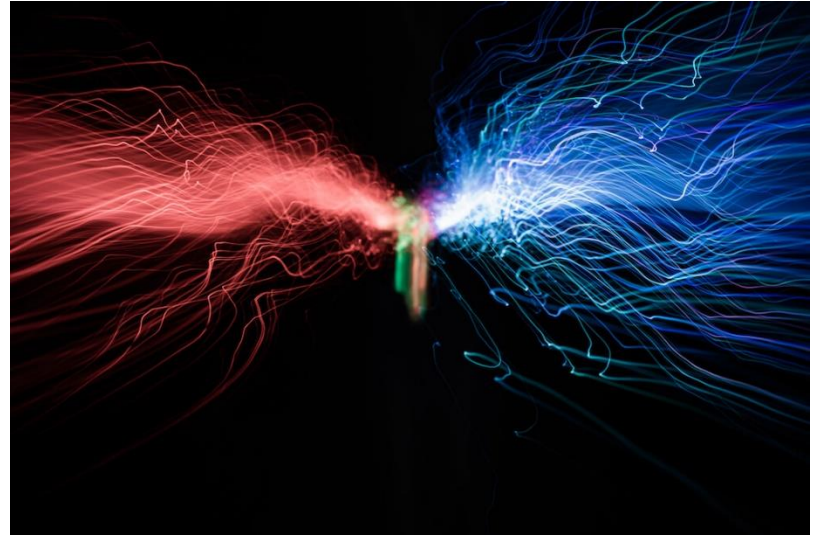
The findings and conclusions in this report are those of the authors and do not necessarily represent the official position of the Centers for Disease Control and Prevention.



Cloud-based technologies are the engine of a modernized, connected IT infrastructure.

CDC's Enterprise Cloud Services enable:

- Multi-cloud flexibility and sustainability
- Scale and resilience on demand
- Shared, easy access to data
- Increased data protections



Dedicated Lab IT Support

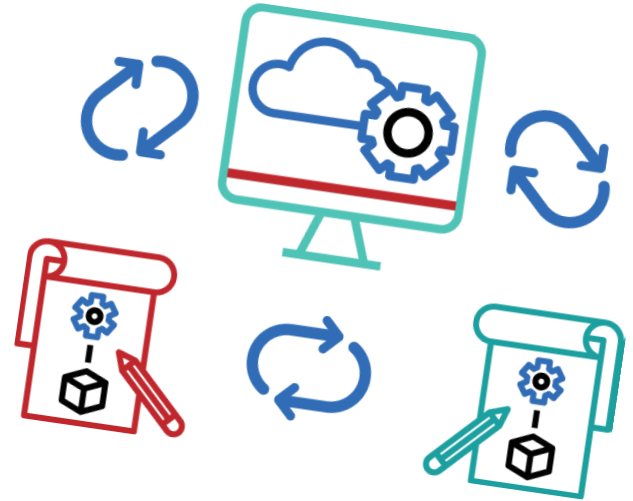
CDC completed modernization pilots with four labs on Roybal campus

Secure lab network for specialized instruments; safer, more secure lab data transfer and storage



No code, low platforms = faster, easier development of response-ready applications and processes

- Increased efficiency, faster intervention, and greater agility
- Empowering non-technical teams = faster scalability
- Faster prototyping
- Better collaboration
- Greater flexibility to respond and adapt



Modern architectures and cloud technologies enable collaboration to more effectively solve PH problems.



Local Public Health Labs and Hospitals



State, Territory, Local and Tribal Health Departments



National Public Health Agencies and Federal Partners



External Partner Authorization
to enable seamless collaboration



Data Transport /Exchange
Bi-directional movement of public health data by CDC and partners



Information Exchange, Shared Data Analytic and Enterprise Zones
with modern data science tools for STLs and partners

*Note: Above drawings were produced using AI.

Modernization Mindset

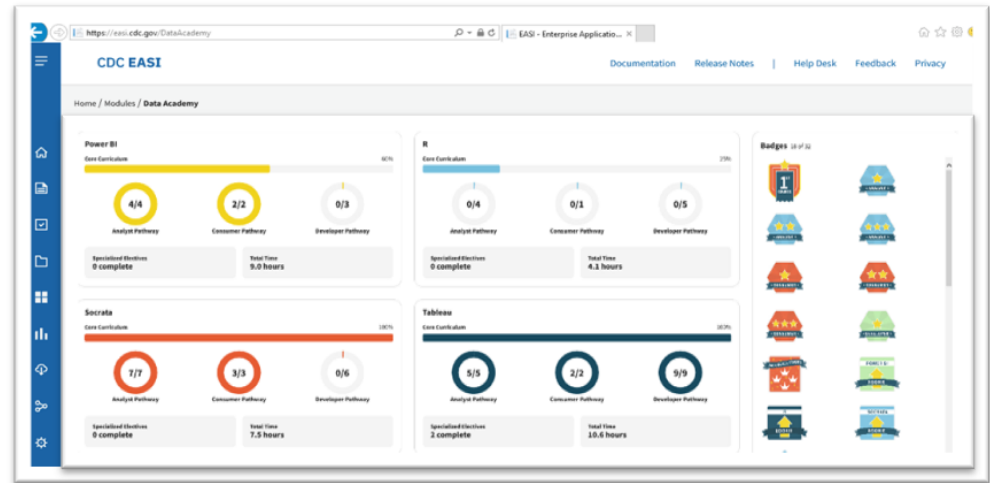
Helps CDC connect people with the information they need faster to make decisions.



IT and Data Modernization

- **Data Academy**

- *Accomplishment:* In the last year, CDC's Data Academy saw an increase in enrollment and completion of all their offerings. Specifically, 1,170 learners participated in 15 live, instructor-led trainings; 217 unique learners from 25 CIOs took courses; 1,240 training hours were completed; and 1,160 courses were completed.
- *Impact:* Data academy trains CDC staff to use new technologies and analytical tools to respond to public health challenges faster and smarter.



Mpox and Ebola Forecasting

INFORM: Generate practical decision support **PRODUCTS**

Produce qualitative and situational assessments on outbreak implications

Risk Assessments



Due to the trajectory of the mpox outbreak, the mpox technical reports will be produced and not on a regular cadence.

These are technical reports intended for scientific audiences. Additional information, including general public, are available on CDC's [mpox site](#).

November 18, 2022
Supplementary Analysis

This addition to [Technical Report 4](#), is intended to provide updated national reproduction number estimates and to report newly created sub-national reproduction number estimates.

[Read the Analysis](#)

October 27, 2022
Technical Report 4

The Multi-National Mpox Outbreak Report provides updates regarding CDC's ongoing response to the mpox outbreak and includes preliminary results of new analyses that can improve understanding of the outbreak and inform further scientific inquiry.

[Read the Report](#)

Technical Reports



CDC risk assessments are intended to inform clinical, scientific, public health, and general public audiences in their planning and decision-making. Additional information is available on CDC's [mpox site](#).

May 17, 2023
Renewed Mpox Outbreaks Likely

A recent uptick in mpox cases in Chicago underscores the risk of renewed mpox outbreaks, which we judge is substantial across the United States.

[Read the Analysis](#)

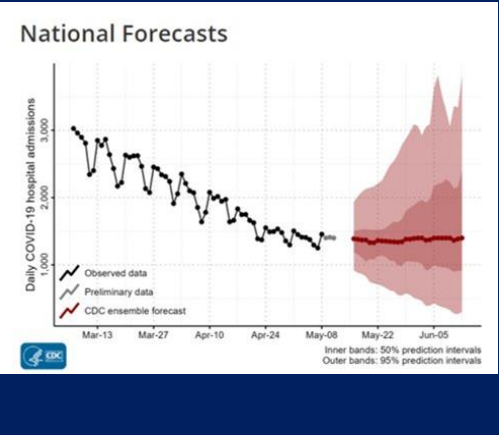
April 4, 2023
Mpox Resurgence and Vaccines

Most jurisdictions in the United States may be at risk of resurgent mpox outbreaks without continued efforts to vaccinate people at risk.

[Read the Analysis](#)

Communicate and translate modeling and analytics results to policymakers, partners, and other audiences

Forecasting



Data management platforms such as the Enterprise Data Catalog (EDC) give CDC researchers better ways to determine which data sources are needed to drive insights and decisions

- **A one-stop shop** to find references for metadata cataloged by participating centers and programs
- **Helps users determine which data sources are appropriate** for their specific project needs
- **All critical data assets become discoverable and accessible**, with no data left behind

